

The firkin



**CAMPAIGN
FOR
REAL ALE**

FREE

Newsletter of CAMRA North Bedfordshire Branch

Vol 37 No 3

Autumn 2012

Bedford Beer and Cider Festival 3rd-6th October



Octoberfest!

In This Issue

CHAIRMAN'S CORNER

**GOOD BEER GUIDE 2013 COMING
SOON**

**BEDFORD BEER AND CIDER
FESTIVAL**

**OTHER AUTUMN BEER
FESTIVALS**

PUB NEWS

**TWO CONTRASTING
BREWERIES**

HOW NPPF CAN HELP SAVE PUBS

INN SIGNS

BEDS ONLINE PUB GUIDE

MORE CIDER IN BEDS, PLEASE!

**CHAMPION BEER OF
BRITAIN 2012**

BRANCH DIARY

DRINK MORE LOCALLY BREWED BEER



B&T BREWERY Ltd



B&T
SHEFFORD
ALES



The



Wellington Arms

40 Wellington Street, Bedford

**BEDFORDSHIRE PUB OF
THE YEAR 2008**

01234 308033

Why not try our other award winning pubs:

The Albion

36 Dunstable Street, Ampthill

The Elm Tree

Orchard Street, Cambridge

01223 502632

The Globe

43 Winfield Road,
Dunstable

LU6 1LS

01582 512300

South
Bedfordshire
Pub Of The
Year 2008

The Brewery Tap

14 Northbridge Street, Shefford

01462 628448

Huntingdon
CAMRA Pub
of the Year
2011

THE CHEQUERS

71 Main Road, Little Gransden

Tel: 01767 677348

CAMRA East Anglian Pub of the Year 2008

Home of *Son of Sid* Microbrewery



Bob and Wendy Mitchell invite you to
try their unique unspoilt village local
with its own special atmosphere



Beer Festival
5th - 8th October





Chairman's Corner

Our branch AGM at the Gordon Arms in July re-elected me to serve as chairman for

another year, now ably supported by new deputy chairman Roger Stokes and a larger branch committee. We are currently revising our campaigning priorities and expect to focus our effort on saving pubs, encouraging more pubs and clubs to offer real cider and perry, and persuading more local CAMRA members to play an active part in the Campaign.

Although we have seen several local pubs this year arise phoenix-like from probable conversion to houses and shops, many more pubs are closed across the UK than the few that re-open. A few years ago we were worried about the loss of pubs in villages where many residents were new arrivals without a stake in the local community, and where drink-driving laws were leading more people to drink at home. Rural pubs are still closing, but now the highest-risk group is suburban pubs. The conversion of the Bird in Hand in Brickhill to a much criticised Tesco Express was well covered in the press, but other suburban pubs remain at risk and some are likely to face closure in the coming months. CAMRA will fight the closure of any pub that provides a valuable community service, whether in a village, a town centre or a suburb. We will also try to persuade our local authorities to adopt pub-friendly policies that will make it more difficult for owners to close and convert valued pubs for short-term financial gain.

One of our best known branch activities is, of course, the annual Bedford Beer & Cider Festival at the Corn Exchange each

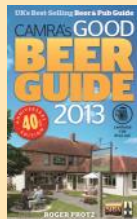
October. Our first festival in 1978 was part of CAMRA's early campaign to promote the virtues of real ale at a time when so many pubs served only processed beers. Since that battle was largely won, the festival has become more of a marketplace to bring often rare real ales to local drinkers, as well as making an annual contribution to what's on in Bedford. This issue gives you a preview of what to expect at this year's festival – we look forward to seeing you there!

Please remember to sign the national petition launched by CAMRA and industry partners to oppose the Treasury's "duty escalator", under which beer duty increases by two percent above inflation every year until 2015. CAMRA believes the escalator should be scrapped. If the new e-petition attracts 100,000 signatures by October, CAMRA's supporters in Parliament can demand a high-profile debate on beer duty before the Chancellor announces his next Budget. Visit www.saveyourpint.co.uk and sign the e-petition today! Cheers!

Peter Argyle, Branch Chairman

Good Beer Guide 2013 Published 13th September

The 40th edition of CAMRA's flagship publication, The Good Beer Guide, will be published on 13th September 2012. Pre-publication orders can be placed on CAMRA's website www.camra.org.uk, or you can buy a copy at Bedford Beer and Cider Festival on 3rd-6th October. The price is £15.99, but is reduced to £10 for CAMRA members – yet another good reason for joining CAMRA!



It's that festival again!



BEDFORD's own Octoberfest will be here again soon. The 35th annual celebration of real ale, cider, perry and foreign beer in the town will be held at the Corn Exchange in St Paul's Square, from Wednesday 3rd to Saturday 6th October, and it looks like being one of the best.

Local CAMRA members have organised a beer festival in the town every autumn since 1978. A real cider and perry bar soon appeared, before the fun spread upstairs to take in a dedicated foreign beer bar.

The festival coincides with National Cask Ale Week, a joint initiative by CAMRA and independent brewers to celebrate the success of Britain's traditional beer heritage. We will certainly be celebrating in Bedford!

Real beer and cider

About 110 different real ales will be available during the week, plus over 40 brands of real cider and perry, and a wide range of draught and bottled foreign beers. All real ales and ciders will be dispensed by gravity, direct from the cask.

Although only a few local pubs sell real cider or perry (made from pears), the popularity of these fermented fruit drinks has earned cider a permanent place in the festival's title. As with real ale, there is a huge difference between real cider or perry and processed keg ciders. We expect to offer several ciders from the growing number of local producers in Bedfordshire and nearby. October is CAMRA's official Cider and Perry Month.

The festival will sell no keg beers or processed ciders dispensed under gas pressure, as you would expect from the Campaign for Real Ale. Full beer and cider lists will be posted on our website during September and printed in the free souvenir programme given to visitors on arrival.



Find us on
Facebook

Real ale is cool

Despite air conditioning, the main hall is certain to warm up during an evening session with up to 800 people there, but heat is bad news for beer. To make sure you are offered good quality beer, power chillers and cooling jackets will be used to keep the casks cool. The pint delivered to your glass will remain in tip-top condition throughout the week.

Foreign beer and food

As well as British real ales, cider and perry in the main hall, the foreign beer bar in the Howard Room upstairs will offer a wide range of speciality draught and bottled beers from Belgium, Germany and other countries. We hope these will include several brews from Bamberg, Bedford's twin city in Bavaria.



The Howard Room and adjacent balcony also provide a quiet area for sitting out and enjoying hot meals and cold snacks from the Corn Exchange catering service.

A varied menu will be available every lunchtime and evening.

Lined glasses mean full pints

Souvenir festival glasses sponsored by Wells Eagle IPA will be available at £2.50 sale or return. All glasses are oversized and lined for pint, half-pint and third-pint, supporting CAMRA's campaign for full measure. Third-pint measures help those who prefer to sample a wide variety of beers.

Our regular engraver will gladly personalise your glass or other objects for you, but you cannot expect a refund on engraved glasses when you leave.

Buy your guides here

CAMRA East Beds Branch will run the festival shop and tombola, offering a range of clothing, books, breweriana and souvenirs from CAMRA and various breweries. Books will include the brand new Good Beer Guide 2013, hot off the press. You can also win lots of attractive prizes on the tombola – “every 1 a winner!”

Entertainment

This year the festival will offer live music only on Saturday evening, when local blues and folk band **Faeries Wear Boots** will help play out the festival to a close.

The **Bedford Morris Men** are expected to dance in the main hall on Saturday lunchtime, probably accompanied by a few visiting teams.

Staff needed!

We welcome volunteers to work at the festival. Although we can't pay you, we offer staff cheap meals and free beer of their choice during a working session. To apply, complete the online staffing form on the website at www.northbedscamra.org.uk, or phone 07920 016371 for a form by post.



Open all day

- but no children please. The festival will be open from 4 to 11pm on Wednesday and from 11.30 to 11 Thursday to Saturday. Admission up to 4pm costs only £1, but after 4pm the charge will be £2 on Wednesday, £3 on Thursday, £4 on Friday and £2 on Saturday. Remember there may be a queue at the door by mid-evening, especially on Friday, always the busiest night.

CAMRA members get in free at any time. If you plan to come several times, join CAMRA on your first visit and get in free for the rest of the week!

The hall lift will be available for visitors with restricted mobility. Ask festival staff at the door to arrange lift access direct from the street.

To make best use of space for drinkers, no children or young people under age 18 will be admitted to the festival. Proof of age may be requested at the door.

The cloakroom service in the basement will again be run by the Bedford Lions Club to raise funds for local charities. Please give generously

Our festival logo

This year's festival logo, once again designed by our engraver, Colin Lilley, draws on the long history of lace making in Bedford and surrounding villages.



As usual an eagle makes its appearance as Bedford's medieval heraldic image.

Pass-outs for smokers

Although smoking is prohibited inside the Corn Exchange, smokers and others needing a quick trip outside will be allowed short pass-outs, leaving their glasses with door staff inside. Drinking alcohol in the street is prohibited.



Don't drink and drive

If you must come by car, take advantage of the free soft drinks and make sure someone else drives the next day. If possible, take a bus, train or taxi home. The festival office will hold local bus and train timetables.

Sponsor a beer cask!

Get your business on the bar by sponsoring a cask of real ale.

For just £50, your company name and logo will be posted on the beer stillage throughout the four-day festival.

Call 01234 344388 or visit www.northbedscamra.org.uk

Wed 3rd - Sat 6th October 2012

Corn Exchange, St Paul's Square, Bedford MK40 1SL



110 real ales plus 40 ciders and perries
Wide range of draught + bottled foreign beers

Opening times

Wed 4-11pm

Thu-Sat 11.30am-11pm

Admission charges

Before 4pm: £1

After 4pm: Wed £2, Thu £3, Fri £4, Sat £2

CAMRA members free at all times

No one under age 18 admitted

Pass-outs to street for smokers

Wheelchair access to all floors

Entertainers

Sat lunch: Bedford Morris Men

Sat eve: Faeries Wear Boots



Find us on
Facebook

CAMRA North Bedfordshire
www.northbedscamra.org.uk

Other attractions

- * Souvenir glasses £2.50 sale or return
- * Pint, half + third pint measures
- * Tasty hot and cold food
- * Free soft drinks
- * Clothing, books and gifts
- * New Good Beer Guide 2013
- * Tombola and pub game
- * Engraver

Sponsor a cask of ale!

£50 puts your business on the bar

Phone 01234 344388 or visit

www.northbedscamra.org.uk

Volunteers needed

Complete e-form on website
or phone 07920 016371

Festival logo by Colin Lilley
M&L Engraving
www.tankardengraving.co.uk



**CAMPAIGN
FOR
REAL ALE**



26th–29th September

ALBAN ARENA, ST ALBANS, AL1 3LD

Up to 300 real ales, plus ciders,
perries and foreign beers

realales@yahoo.com

www.stalbansbeerfestival.com

Open:
11am - 11pm
26th-29th September

Admission:
£3 Wed - Fri, £4 Sat
CAMRA members free at all times

Thursday night on stage:
Nick Stephenson and his band

Rockin' the Arena on Saturday:
Stompin' Dave (lunch)
Nimmo Brothers (evening)



Don't drink and drive. Use the train or bus. NO ONE UNDER THE AGE OF 18 CAN BE ADMITTED



**Over 55 real ales,
plus real cider and
perry, bottled
foreign beer, food,
wine & soft drinks**

VENUE Burgess Hall, St Ivo
Centre, Westwood Road, St
Ives, PE27 6WU

OPEN: Thursday 5-11pm
Friday all day from 12-11pm
Saturday all day from 12-
10pm

Families welcome until 8pm

ADMISSION: Thursday - £1 5-
7pm, £2 after 7pm; Friday- £1
12-7pm, £3 after 7pm; Satur-
day- £1 all day

*CAMRA members free at all
times*

Take the Busway from Cambridge,
Huntingdon and Peterborough direct to
the festival. See www.thebusway.info

**Campaign for Real Ale
25th—27th October 2012**

St Neots Beer Festival ... 14-16 March 2013



www.huntscamra.org.uk/festival



Autumn Beer Festivals

21st Letchworth Garden City Beer & Cider Festival

Thu 20 to Sat 22 September at Greenhouse Community Market, The Gallery, Station Road, Letchworth GC, SG6 3BL (new venue, rail stn 150m). Open Thu 5-11, Fri/Sat 12-11. Admission all sessions £2, CAMRA members free. Over 50 real ales including local beers, selected cider and perry, draught and bottled foreign beers. Hot and cold food, souvenir glasses, tombola and CAMRA shop. No music – a quiet festival.

www.camranorthherts.org.uk

St Albans Beer Festival

Wed 26 to Sat 29 September, Alban Arena, Civic Centre, St Albans AL1 3LD (rail stn 5min). Open Wed 12-11, Thu-Sat 11-11, admission prices vary, CAMRA members free. Advance tickets available via website. About 350 real ales, plus cider and perry, bottle-conditioned beers and a wide range of foreign beers from around the world. Daily breweriana auctions, tombola, prize quiz Saturday, live music Thu eve and Sat lunch/eve. Frequent trains from Bedford or Flitwick.

www.stalbansbeerfestival.com

35th Bedford Beer & Cider Festival

Wed 3 to Sat 6 October, Corn Exchange, St Paul's Square, Bedford MK40 1SL. Open Wed 4-11, Thu-Sat 11.30-11. Admission before 5pm £1 and free to CAMRA members at all times.

For full details see pp.4-7 in this issue.

www.northbedscamra.org.uk

Nottingham Robin Hood Beer & Cider Festival

Thu 11 to Sat 13 October in grounds of Nottingham Castle, Nottingham NG1 6DH (rail stn short walk). Open 11-11 all days. Admission package includes glass and tokens – see website for details and

advance tickets, which are recommended at peak times. Discount for CAMRA members. About 1,000 cask ales plus over 200 real ciders and perries, mainly from smaller producers, and country wines. Selection of hot and cold food, live music on bandstand outside beer marquee. East Midlands trains from Bedford or Luton.

www.beerfestival.nottinghamcamra.org

6th Cambridge Oktoberfest

Fri 12 to Sat 13 October at University Social Club, Mill Lane, Cambridge (X5 bus stop 15 min). Open Fri 5-10.30, Sat 12-10.30. Admission £2.50, CAMRA members free. More than 30 real ales from local and national brewers, some select local ciders plus a good choice of German draught and bottled beers. Regular X5 bus from Bedford.

www.cambridgebeerfestival.com

19th Milton Keynes Concrete Pint Beer Festival

Wed 17 to Sat 20 October at The Buszy, Elder Gate, CMK MK9 1LR (rail stn 200m, buses 100m). Open Wed 5-11, Thu-Sat 12-11, admission free except Thu/Fri after 5pm £3, CAMRA members always free. About 90 real ales, cider and perry, hot and cold food, souvenir glasses. Live music Thu and Sat eves. Regular X5 or 40 buses from Bedford. www.mkcamra.org.uk

21st St Ives Booze on the Ouse Beer and Cider Festival

Thu 25 to Sat 27 October at St Ivo Recreation Centre, Westwood Road, St Ives PE27 6WU. Open Thu 5-11, Fri 12-11, Sat 12-10. Admission before 7pm £1 – after 7pm: Thu £2, Fri £3, Sat £1, CAMRA members free. More than 55 real ales plus real cider, perry and foreign beers, souvenir glasses, tombola and CAMRA shop. Food available all day, free soft drinks for drivers. www.huntscamra.org.uk

THE DEVONSHIRE ARMS

*Now Serving
Real Draught
Cider*



Free Wi-Fi available

Fine Wines

*Lovely courtyard
garden*

A local community pub in the Castle Road area of Bedford with a warm welcome and friendly atmosphere.

Serving an increased range of Quality Cask Ales - Eagle IPA, Young's London Gold, Young's Special, Directors and Guest Ales.

Our Sister Pub "The Burnaby Arms". Stanley Street, Bedford now open. Tel: 01234-330056.

www.devonshirearmsbedford.co.uk

32 Dudley Street, Bedford MK40 3TB Tel: 01234 359329



Milton Keynes & N Bucks
Branch of CAMRA
Presents

**THE
CONCRETE
PINT 2012**

Beer Festival

90+ Beers, Cider and Perry

Wed 17 Oct 5pm - 11pm
Thu-Sat 18-20 Oct noon - 11pm

Music

Saturday: Isabelle* between
7pm-8.30pm and 'The Band'
between 9pm and 11pm

Venue

The Buszy, 401 Elder
Gate, Central Milton
Keynes, MK9 1LR

For more info contact:
Doug Dillow 07738 598128 or email:
festival@mkcamra.org.uk

www.mkcamra.org.uk/beerfestival/



BEER! CIDER! PERRY!

50+ Cask Beers
15+ Ciders & Perries
Foreign Beers
Local Food



CAMRA
CAMPAIGN
FOR
REAL ALE

LETCWORTH G.C. Beer & Cider Festival 2012

The Green House Community Market
Station Road, Letchworth, SG6 3BL



SEPTEMBER
Thu 20th (5pm-11pm)
Fri 21st (noon-11pm)
Sat 22nd (noon-11pm)



Entry on door: £2.50 - CAMRA, EBCU & OAPs FREE

Organisers reserve the right to refuse admission
Logo by www.rollins-design.co.uk

www.camranorthherts.org.uk

[@nh_camra](https://twitter.com/nh_camra)

Pub News

George & Dragon, Mill Street, Bedford



This interesting old town pub was recently refurbished, and now offers Greene King IPA and St Edmunds on handpump, but not the stronger Abbot Ale. There is a pleasant lounge area at the front for casual drinkers, but most of the floor area and the attractive rear garden are mainly used for serving food. Call 01234 345061.

Burnaby Arms, Stanley Street, Bedford

For many years, this corner community pub in the Black Tom area held out against the trend with no real ale at all. Now, the pub has been thoroughly refurbished with a whole bank of handpumps! The new licensees are Martin and Naomi from the Devonshire Arms, with managers Lucie and Steve in everyday charge. Wells Eagle IPA is joined by Young's London Gold, Courage Directors and a guest ale – Holt's Humdinger from Manchester when we visited. Although part of the floor area is set out with seating, the pub does not serve food. Call 01234 330056.



Three Compasses, Upper Dean

Welcome to new licensees Will and Beverley Errond, who took over this attractive, thatched and boarded village pub in the spring. Wells Eagle IPA, Bombardier, Courage Directors and an occasional guest beer are available on the handpumps. Home-cooked pub food is served in the bar and the separate lounge used as a restaurant, with a roast on Sunday. Their slogan – "traditional, honest food done well" – says it all. There is a quiet, family-friendly garden to the rear and a



games area behind the bar that can be busy on skittles match nights. As tables are limited, it is wise to book for Sunday lunches. Call (01234) 708346 or visit www.3compasseshuntingdon.co.uk

Pub News (continued)

Changes on Bedford High Street

Several of the pubs along the High Street are looking a bit different. The former Lit-ten Tree is now **Yates's**. Its new reincar-nation offers Bombardier on handpump, although we have no reports yet on the quality of the beer. Meanwhile, the **Cross Keys** no longer offers real ale and the **Embassy Bar** (formerly Harveys) has never offered the real stuff.

Wychwood Inns, owners of what was the



Hobgoblin, have shortened its name to **The Hob**. The refurbished pub has Wychwood Hobgoblin and a guest beer – Jennings Snecklifter when we called – on hand-pump. A surprise here was finding a guest perry on a third pump. With our

new push to get more cider and perry into local pubs, we hope the managers will sell enough to keep it going.

There is less change to report at the other High Street pubs, with the **Bear** still offer-ing Greene King IPA coupled often with unusual guest ales. Across the road, the **Bankers Draft** offers a choice of real ales at attractive prices as we expect from a Wetherpoons pub, and continues to be one of our few regular outlets for real cider and perry. At the other end of the street, the **Rose** offers an attractive choice of real ales, with Jennings Cocky Blonde and Timothy Taylor Landlord available when we called.

Just round the corner in St Paul's Square,

the **Chameleon Bar** now sells its own hoppy session bitter, Chameleon Ale, for only £1.50 a pint! We do not know where it is brewed, but the staff tell us they sell a lot – surprise, surprise! Deuchars IPA was also on when we called in.

Fox & Hounds, Riseley



As reported in the local press, this popular pub/restaurant will close for extensive refurbishment in September. We do not yet know what Charles Wells Pubco plans to do with the old building, but it would be foolish indeed not to retain what has made the Fox one of the company's most suc-cessful pubs in recent years. We look forward to seeing the improvements in due course.

Carpenters Arms, Cranfield



Sadly, the attempt to form a local community enterprise to purchase the Carps has closed, after the organisers failed to

secure enough money from the village. The premises will now go back on the market, but regulars hope a knight in shining armour will yet come forward to buy and reopen a traditional village pub.

**Use the Bedfordshire
Pub Guide!**

www.bedspubs.org.uk

Two Contrasting Breweries

In June I visited two very different breweries. First, the CAMRA East Anglia regional meeting was held at Elgood's in Wisbech. This is a beautiful Georgian



building on the riverfront. Inside, although some modernisation has taken place, many of the brewing

vessels are vintage ones (though some have new stainless steel linings). The Elgood family still controls the company, which rates as a medium-sized brewery, with 30-odd tied houses in and around Wisbech. The main brewery, used for their staple products Cambridge Bitter (3.8% abv), Black Dog Mild (3.6%) and Golden Newt (4.1%) can produce up to 100 barrels, while an in-house mini brewery is used for one offs and seasonals, and has a capacity of ten barrels. Head brewer Alan Pateman gave



the CAMRA branch officers an entertaining and informative tour, and the company

gave us an excellent buffet lunch and, of course, free pints of Cambridge Bitter and Black Dog!

A few days later, North Beds CAMRA had planned an all-day tour to some breweries in Essex. Sadly, there weren't enough takers to pay for the coach and the trip was cancelled. The silver lining, though, was that we made an evening visit instead

to our newest local brewery, Red Brewery in Great Staughton, just over the county boundary from our own Little Staughton. Elgood's opened in 1795; Red opened in April 2012!

Owner John Kearney welcomed us to the



brewery, which occupies a spacious building on a farm, with Highland cattle grazing outside. His equipment is all brand new, and

he brews three ales regularly in his four-barrel plant, all of them 4.0 abv: Staughton Bitter, a very hoppy, copper-coloured bitter; All Saints, named after the local church, a dark beer but not a mild, with a



well balanced flavour; and Sundial, a golden bitter, named after a local landmark. In the

fermentation vessel, not yet ready, was another one, a blonde beer containing 20% wheat, likely to be called Pathfinder after the WW2 squadrons which were based at Little Staughton airfield.

After a prolonged session at the brewery accompanied by plentiful amounts of the three available ales, we adjourned to John's local, the Crown at Little Staughton (taking him with us in our minibus), where his Staughton Bitter was on handpump among other ales, for a final convivial session of the evening.

Fytton Rowland

New Policy Framework Will Help Save Pubs

The National Planning Policy Framework is a powerful weapon in the battle to protect our beleaguered pubs.

Over recent years, we've lost huge numbers of pubs through conversion to housing and other uses needing planning permission. When Councils consider planning applications, they must take into account not only their detailed local policies but also the broader national policies.

The new Framework sweeps away a complex set of rules running to over 1000 pages, replacing them with just 52 pages of policy guidance. Thanks to intensive lobbying by CAMRA, this new guidance includes national policies which are potentially very helpful to community facilities like pubs. Most importantly, Councils are told to "guard against the unnecessary loss of valued facilities and services" which specifically includes community pubs. What's also crucial is that these rules apply to **all** pubs, urban and rural.

Councils must have in place, by March 2013, local planning policies consistent with the Framework; in the meantime, Framework policies should generally be applied.

So what does all this mean if your local is threatened by an unwanted planning application? You should object to the Council, of course, but when doing so, make sure to refer to the relevant policies in the Framework. If you can show that loss of the pub would reduce the local community's ability to meet its day-to-day needs, then the Council should refuse the application. CAMRA has produced an advice note on the best wording to use and this can be found, along with much other information on planning issues, at www.camra.org.uk/nppf. If you would like any of these documents posted to you then please phone CAMRA's Campaigns Officer, Claire Cain, on 01727 798 454.

Some councils have used the NPPF to refuse planning applications to convert pubs to houses. In those cases, applicants have appealed against the refusal and, in each case, the Government inspector, considering the appeal, has dismissed it largely because approval would run counter to Framework policies.

Not every development adversely affecting pubs needs planning consent – conversion to a restaurant or a shop for instance. CAMRA is campaigning hard to get planning law changed in these areas. In the meantime, the new Framework is very much a step in the right direction.

If you have any issues regarding a campaign to save a local pub in your area please contact CAMRA's Local Planning Policy Advisor Paul Ainsworth on paul.ainsworth@camra.org.uk or go to camra.org.uk/nppf



Bedford's Premier Homebrew Centre

- comprehensive range of bitters
- wide selection of lagers
- excellent prices
- free advice

and a happy smiling face

HELPLINE

01234 353856

15 Union Street, Bedford MK40 2SF

Opening Hours:
Tuesday to Saturday 9.30am to 5pm
Bank Holiday Saturdays 9.30am to 2pm



15

Inn Signs and Pub Names

The two-fold subject of inn signs and pub names provides scope for a fascinating hobby and an insight into both local and national heritage. The concept of such signs dates back to the Romans who decreed that every taberna (tavern - where wine was sold) must display evergreens above the entrance. From this humble beginning, comes the pub name the Bush (various locations) and the proverb 'A good wine needs no **bush**'.

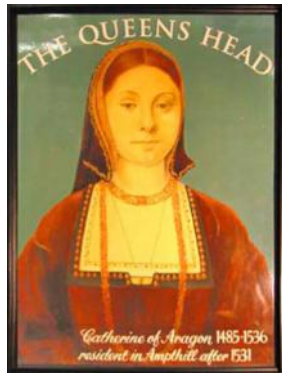
In medieval times, the **Alestage** served the same purpose and reminded the **Ale-taster** (an early form of Trading Standards Officer) where ale needed testing. Ale that failed the 'breeches test' was destroyed and the unfortunate brewer committed to the **Ducking Pool**. As alehouses increased in number, signs presented objects recognisable to the mostly illiterate populace, e.g. **Bell, Bull, Cross, Horse, Star**, and frequently the badge of the lord of the manor.

Most inn signs were hand painted by artists who eked out a living by also decorating shop fronts and canal boats. A large brewing company such as Flowers or Whitbread maintained their own art studio with a team of full-time artists. Wadworth of Devizes is one of the few remaining breweries whose pub signs are hand painted. Today, an increasing number of signs are computer generated, resulting in identical images sent to pubs in different areas.

Inn signs help to create local distinctiveness and in many cases are unique. Both church and pub provide spiritual comfort,

but the **Vicars Inn** (Arlesey) is the only known example of that name. Formerly the **Steam Engine**, the name isn't the only change. By 2008, the clergyman on the sign had given way to the Rev. Susan Edwards!

Wording on the former sign of the **Queens Head** (Amphill) stated that the royal depicted was Catherine of Aragon, who resided here pending her divorce from Henry VIII in 1533. The **Wyvern** (Luton) is named after the Vauxhall saloon car that was made in the 1950s.



Can you identify the **Three Cups** (Bedford) depicted on the former sign of North Beds CAMRA's regular meeting place? Two are already known, the Calcutta Cup and the FA Cup, but what is the third cup?



Inn Sign Society members not only photograph signs, but research the origin of each name, and record the information for posterity. Never has the slogan 'When it's gone, it's gone' seemed more apt.

For further information about the Inn Sign Society, please visit www.innsignsociety.com.

Anthony Collis

Hertford's best kept secret

Now yours to share!

<ul style="list-style-type: none"> Dark Ales Light Ale, Light Bitter Delicate, Mellow ●○○○○ ●○○○○ 	<ul style="list-style-type: none"> Ales Pils, Malt, Bitter Warning, full-bodied ●●○○○ ●●○○○ 	<ul style="list-style-type: none"> Brews Heavy, Malt Rich, Bitter ●●●○○ ●●●○○ 	<ul style="list-style-type: none"> Heavy, Gold Brews, Light Orange Refreshing, Mellow, Heavy ●●●○○ ●●●○○
--	--	--	---



RUSHDEN HISTORICAL TRANSPORT SOCIETY

STATION APPROACH, RUSHDEN,
NORTHAMPTONSHIRE, NN10 0AW
01933 318988

BEER AND JAZZ FESTIVAL

29 & 30 SEPTEMBER 2012

CAMRA AWARD WINNING REAL ALE BAR
(CAMRA NATIONAL CLUB OF THE YEAR 2010
RUNNER-UP 2011 & 2012)

LIVE JAZZ BANDS

STEAM HAULED TRAIN RIDES ON
PRESERVED RAILWAY LINE

FOR MORE INFORMATION VISIT WWW.RHTS.CO.UK

PIG n FALCON New St St Neots

**CAMRA
Cardholders
Discount
Available**

Brews To Date

912



**Live Music
Wed, Fri & Sat**

Huntingdonshire CAMRA
**Most Improved
Pub Of The Year
2010**

**Cider Pub Of
The Year 2012**

**Pig's Autumn
Beer Fest**
30 Real Ales
& Ciders
25th - 4th Oct/Nov

**Pig's Winter
Beer Fest**
30 Real Ales
& Ciders
24th - 3rd Jan/Feb

Hog & Partridge
Russel Street St Neots
Due To Open At The End Of August

TEL 07951 785678 - WWW.PIGNFALCON.CO.UK - PE19 1AE

ENGINEERS ARMS, HIGH STREET, HENLOW, BEDS.

www.engineersarms.co.uk 01462 812284

Wednesday 17th - Sunday 21st October

Wednesday Night "The Incredible Dr Busker"
Featuring over 100 Traditional Real Ales, Ciders
& Perries.

Open All Day from 12pm - Free Admission
Snacks Available Daily, BBQ Thursday, Friday &
Saturday Evening.



Local Hotel offering Special Festival Rates - Call
The Airman Hotel, 01462 850853 Quoting Ref: Ref Fest. 17
Nearest Train Station:- Arlesey (Kings Cross - Peterborough)
For Camping or caravanning facilities - Henlow Bridge Lakes,
Arlesey Road, Henlow - Call 01462 812645

TRING BREWERY Co.

Here at Tring Brewery we select the finest ingredients
and craft them into a variety of sumptuous, award
winning ales.

In fact we produce over 25 different cask ales every year...
A beer to suit all palates? We'd like to think so.

This is a big task but when our daily focus is on tiny
malt grains, fragile hop leaves, and microscopic yeast
cells, sometimes it's nice to go big.

For 2012, each of our monthly specials will be brewed
using only specially selected UK hop varieties.
Look out for these and our other beers in your local
pub, or head to our brewery shop located on the
outskirts of Tring, Hertfordshire.



www.tringbrewery.co.uk
01442 890721

Use the Bedfordshire Pub Guide!

CAMRA's online guide to Bedfordshire pubs is your guide to real ale pubs in the county. All pubs, hotel



bars and sports ground bars open to the public in the county are listed, although full details and a photo are normally included

only where real ale is sold.

You can search the guide by town, village, postcode, or pub name, or for those



offering real cider. You can download details to plan visits or a local pub

crawl. You can even compile and print out your own personal guide to a whole town or village.




And it's all free of charge!

You can also help us keep the guide up to date, whether you are a licensee, a pub regular or an occasional visitor.

Send your amendments to
pubsofficer@northbedscamra.org.uk

www.bedspubs.org.uk



Shaun and Lisa welcome you to

The Greyhound, Haynes

A village pub/restaurant in the picturesque village of Haynes offering good food with excellent service in comfortable surroundings.

Good wine selection, Greene King IPA and Abbot Ale served along with a Greene King seasonal ale. Large Beer garden at rear. Restaurant Bookings advisable. Open all day.

Please call **01234 381239** for reservations

www.thegreyhoundhaynes.co.uk

THE GUINEA

Shaun and Lisa from The Greyhound in Haynes would like to welcome you to The Guinea in Moggerhanger.

Lunchtime set menu, main menu and specials available daily.

Great wine, beer and ale selection with a guest ale available.

Any occasion catered for
We look forward to seeing you
Booking Advisable



Bedford Rd, Moggerhanger, MK44 3RG Tel: 01767 640388

October is Cider and Perry Month!



CAMRA has declared October to be **National Cider & Perry Month**. Real cider and perry, fermented from apples and pears respectively,

are rare drinks in Bedfordshire, with only eight pubs in North Beds CAMRA's area selling at least one on a regular basis. If you would like to see cider or perry on sale at your pub, ask the landlord to get some during October.

We expect to see a good choice at the National Apple Day celebrations at Bromham Mill on Sunday 21st October, where the cider bar is run by the catering team from Bedford Corn Exchange.



The photo shows new Bedfordshire real cider producer Elizabeth Evershed from Odell talking to Firkin editor Fytton Rowland earlier this year.



Pubs offering cider or perry on a regular basis can be added to CAMRA's national cider database, with point of sale promotional material available free of charge. To join the scheme, contact the branch cider representative at ciderrep@northbedscamra.org.uk.



Beer Festival Equipment

For the Hire of Barrel stillage, cooling, taps, bars and more!


Barrel (9gl) - Stillages/ Racking, traditional wooden - 2 x 9gl, 12 x 9gl Barrels, taps, chiller saddles, Insulation jackets, Chillers, Remote, Bar units - two metre long, flooring and hand pumps

Photos and a very competitive price list available on the web site - www.beerfestivalequipment.co.uk

Contact: john@beerfestivalequipment.co.uk

Tel: 07770 938300

Based near Bicester



The
White Horse
84 Newnham Avenue, Bedford, Bedfordshire, MK41 9PX
Beer and Banger Festival
Wed 31st Oct to Sun 4th Nov
11am to 11pm
Live music Sat 3rd Nov
Discount for CAMRA members
Full programme of events
See website for details
www.whitehorsebedford.co.uk
Tel: 01234 409306

Champion Beers of Britain

At the Great British Beer festival in August, CAMRA's Champion Beers of Britain for 2012 were announced.



The overall Champion was **No. 9 Barley Wine**, clocking in at an impressive 8.9% abv, from **Coniston Brewery** in Cumbria – this was also the Cham-

pion Winter Beer.

In second place was Trawlerboys Best Bitter from Green Jack Brewery of Lowestoft, also Champion Best Bitter at 4.4% abv.



Third came American Pale Ale from Dark Star Brewery in Sussex, also Champion Golden Ale at 4.7% abv.

The other category winners were: Champion Mild, Rudgate's Ruby Mild (4.4% abv) from York; Champion Bitter, Purple Moose's Snowdonia Ale (3.6%) from (you've guessed it!) Snowdonia; Champion Strong Bitter, Festival from Dark Star (5.0% abv); Champion Speciality Beer, Chocolate Cherry Mild from Dunham Massey Brewery in Cheshire (3.8% abv); Champion Real Ale in a Bottle, Ember from Stewart Brewery in Midlothian (5.0% abv).

Local brewery Son of Sid got a Bronze in the Mild category for Muckcart Mild.



**THE DOG
AND
BADGER**

**GREAT FOOD, REAL ALES
& FINE WINES**

- 2 Course Lunch £7.95 Mon to Sat.
- 2 Main Meals for £14 Mon to Wed.
- Sunday Lunch served 12-7pm.
- Extensive Menu & Daily Specials.
- In the Bar; Big Screen TV
- Regular Quizzes, Rockeoke and Karaoake.
- Super Kiddie Garden!
- Dogs welcome in the gardens on leads.

*Open all day Fri, Sat and Sun.
Mon to thurs 12-3pm & 5-11pm.*

EAT • DRINK • ENJOY • RELAX

109 CLOPHILL ROAD, MAULDEN, MK45 2AD
TEL. 01525 860237
www.DogAndBadgerBedford.Co.UK

The Victoria Arms



23 High Street
Wilden
MK44 2PB
01234 772437

Home cooked food our speciality
- food is served 12 – 2pm and
6-9 Tuesday to Saturday
and 12-4pm on Sunday

Sunday roasts £8.95 and Curry
Night on the 2nd Thursday of
each month £6.95

Billingsgate Fish and Hand cut
chips available to eat in or
takeaway

Branch Diary



CAMRA North Beds Branch business meetings are normally held on the third Thursday of alternate months, e.g. January and March. Social and campaigning events are usually held on the second Thursday of each month.

Guests are welcome at social events, but members have priority on brewery visits. For latest information check What's Brewing or visit the branch website at www.northbedscamra.org.uk

Unless otherwise stated, for all events further details can be obtained from, and bookings made with, Gary Mudd on 01234 741871 or e-mail socials@northbedscamra.org.uk

SEPTEMBER

Thursday 13 – Social

Details to be announced.

Thursday 20 – Branch meeting

Business meeting at the Three Cups, Newnham Street, Bedford, at 8 p.m.
CAMRA members only.

OCTOBER

Wednesday 3 to Saturday 6 – 35th Bedford Beer and Cider Festival

Details on pages 4-7.

Saturday 13 – CAMRA Bedfordshire Branches Joint London Day Trip

Details to be announced.

Thursday 25 – Brewery Tour to Hop-ping Mad Brewery, Olney

Preference given to those who worked as volunteers at the Bedford Beer and Cider Festival.

NOVEMBER

Thursday 8 – Social

Details to be announced.

Thursday 15 - Branch meeting

Business meeting at the Three Cups, Newnham Street, Bedford, at 8 p.m.
CAMRA members only.

DECEMBER

Thursday 13 – Branch Christmas

Social — Details to be announced.

The Bear
High Street, Bedford

One guest ale always available, plus Green King IPA, Guinness, and a range of ciders and lagers.

A varied and eclectic mix of music on the juke box.

Friendly staff and customers.

Pool table, Football table, and a large yard with smoking area to the rear.

Opening Hours:
12 - 12 Monday to Thursday
12 - 1am Friday & Saturday
7 - 11.30pm Sunday



Now Refurbished, Why not come in & see us

sky SPORTS HD ESPN HD

2 SCREENS, 2 GREAT GAMES IN HD AT ONCE!

OPENING TIMES

Mon 5.30 - 11pm

Tues - Thurs

12 - 2.30pm 5.30 - 11pm

Fri - Sun All Day

*We are in the
Good Beer Guide 2012*



THE POLHILL ARMS

*Cask Ale
is our Speciality*

**Greene King IPA
Old Speckled Hen
Changing Guest Beers**

Great British Pub Food Served

**Large Family Play Garden
& Car Park**

Call: 01234 771398

Email: info@polhillarms.co.uk

Web: www.polhillarms.co.uk

Wilden Road, Renhold, Bedford, MK41 0JP

THE
BEDFORD SWAN
BEDFORD
A SELECT HOTEL BY B&B

★★★★

BEER & FOOD FESTIVAL

THURSDAY 8RD - 11TH NOVEMBER

Over 30 local & national award winning cask ales, ciders & perries, with food locally sourced by Taste Real Food.



£3

PER PERSON

INCLUDES BRANDED PINT GLASS & BEER GUIDE

Free Entrance for CAMRA & Taste Real Food Members



Call 01234 346 565 or email info@bdfordswanhotel.co.uk
www.bedfordswanhotel.co.uk

BORN AND BREWED IN BEDFORD

Official Beer of
BEDFORD
BLUES



Brewed in the heart of Bedford with the finest Red Tractor accredited malted barley and natural mineral water from our well, sunk by Charles Wells himself in 1904.

Wells Eagle guarantees a quality pint, every time.

Come and visit Eagle's nest!

To arrange a brewery tour, please contact
01234 272766 and ask for the Brewery
Tour Representative.



www.facebook.com/eaglebeer

BEDFORD'S BEER FOR THE BEDFORD BLUES

